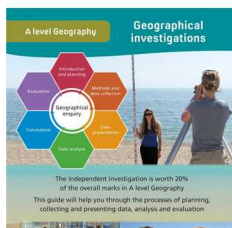


Fieldwork Support for A Level Geography



Geography Fieldwork

FSC Geography Fieldwork Website

<https://www.geography-fieldwork.org/a-level/>

Geographical Enquiry and the Route to Enquiry

Fold out guide free PDF download

<https://www.geography-fieldwork.org/media/16632/geographical-investigations-hi-res.pdf>

#fieldworklive

FSC #fieldworklive- Investigating Place

Teacher Guidance, Pre-lesson preparation, Student Sheet, Fieldwork video <https://encounteredu.com/live-lessons/ks4-5-investigating-place-280420>

FSC #fieldworklive-Hydrology and Flooding

Teacher Guidance, Pre-lesson preparation, Student Sheet, Fieldwork video
<https://encounteredu.com/live-lessons/ks4-5-hydrology-and-flooding-010520>

FSC NEA Student e-conference

Geography NEA Student e-conference- Interpreting the Landscape

<https://bit.ly/FSClandscape>

Geography NEA Student e-conference- Physical Geoskills

<https://bit.ly/FSCphysicalgeoskills>

Geography NEA Student e-conference- Human Geoskills

<https://bit.ly/FSchumangeoskills>

A Level Courses with FSC

Set your students up for success

Our secondary courses are the ideal way to benefit from FSC's expertise. Courses offer quality first hand experiences for students, all linked to the curriculum.

- Carry out fieldwork and practical learning requirements
- Link to work back at school
- Spend dedicated time outside the classroom to inspire and motivate students
- Develop life skills such as resilience, teamwork and problem solving
- Risk assessed sites and fully Covid-secure centres

Day and residential courses

Courses are packed with content, led by our expert tutors and spend as much time outdoors as possible.

<https://www.field-studies-council.org/secondary-and-further-education-courses/>



Digital and outreach

Our digital and outreach packages enable students to experience FSC's fantastic outdoor learning without having to travel.

<https://www.field-studies-council.org/digital-and-outreach/>



Fieldwork Support for Teachers



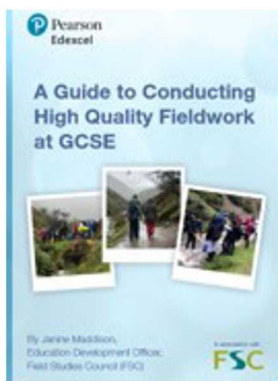
#fieldworklive Teacher CPD

FSC #fieldworklive- Building a fieldwork toolkit for new geography teachers

Handout, Fieldwork video

<https://encounteredu.com/live-lessons/building-a-fieldwork-toolkit-for-new-geography-teachers>

FSC and Awarding Organisations/Partners



Pearson Edexcel

Conducting High Quality Fieldwork at GCSE

Three videos and a guide

<https://qualifications.pearson.com/en/subjects/geography/geography-fieldwork.html>



OCR

GCSE Geography Skills

Handbook: <https://www.ocr.org.uk/Images/594899-geographical-skills-handbook.pdf>

Workbook: <https://www.ocr.org.uk/Images/594898-geographical-skills-student-workbook.docx>



AQA

A Level Environmental Science Practical Skills Handbook

Page 18 details how this guide can be used for A Level Geographers

<https://filestore.aqa.org.uk/resources/science/AQA-7446-7447-PHBK.PDF>



New GEO website

FSC and the GA are running a number of online tutorials to support students through the new GEO website running in the autumn of 2020

www.geography.org.uk