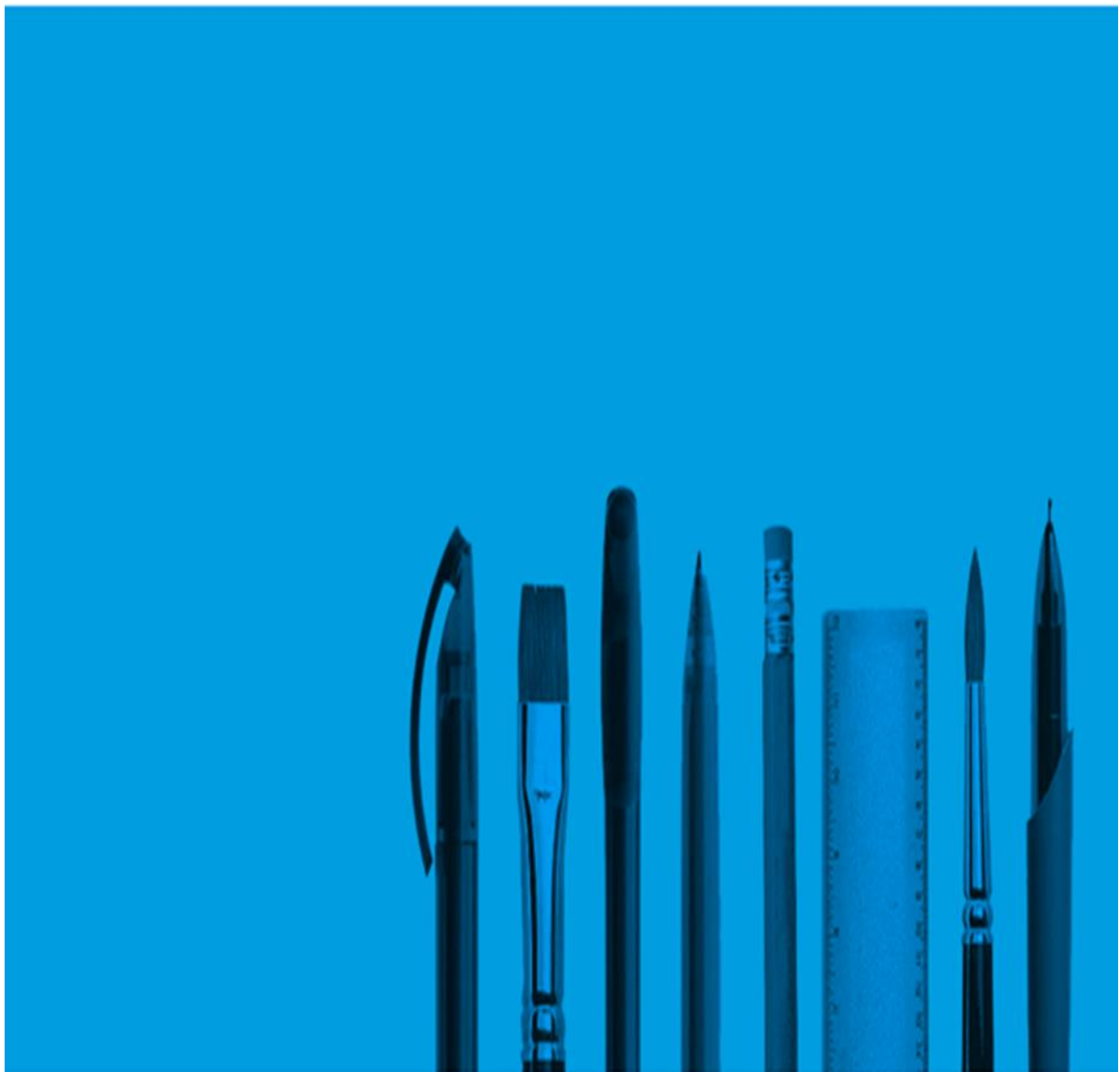


General and Vocational Qualification Fees 2025/26

Effective period: 1 September 2025 to 31 August 2026



1.0 Introduction	3
2.0 What do WJEC entry fees include?	3
3.0 WJEC Invoicing Policy	4
4.0 Supplementary Fees	
4.1 Late, Very Late Entries and Registrations	6
4.1a Examination Entry Deadlines	7
4.2 Amendments	10
4.3 Late Cash-In (Aggregation) Fee	11
4.4 Entry Withdrawal	12
4.5 Transfer of Candidates	12
4.6 Centres with Subjects Requiring Examiner or Moderator Visits	13
4.7 Overseas centre administration fees	13
5.0 Adaptations & Remote Invigilation	14
6.0 Post Results Services	15
7.0 General Qualifications	
7.1 WJEC CBAC GCSE – Teaching from 2025	16
7.2 WJEC CBAC GCSE – Current Specifications	17
7.3 WJEC Eduqas GCSE – Current Specifications Designated for Wales	20
7.4 WJEC Eduqas GCSE – Current Specifications	21
7.5 WJEC CBAC AS and A Levels – Current Specifications	23
7.6 WJEC Eduqas AS and A Levels – Current Specifications Designated for Wales	27
7.7 WJEC Eduqas AS and A Levels – Current Specifications	28
8.0 Vocational Qualifications	
8.1 WJEC Entry Level Certificate	31
8.2 WJEC Entry Pathways	32
8.3 WJEC Language Pathways	33
8.4 WJEC Cymraeg Gwaith / Work Welsh	34
8.5 WJEC Vocational Certificates	35
8.6 WJEC Vocational Awards and Certificates	36
8.7 WJEC Vocational Awards – Teaching from 2025	37
8.8 WJEC Applied Certificates and Diplomas	38
8.9 WJEC Applied Certificates and Extended Certificates	39
8.10 WJEC Alternative Academic Qualifications	40
8.11 WJEC Diploma in Foundation Studies	41
8.12 WJEC Extended Project	41
8.13 Welsh Baccalaureate	42
8.14 Essential Skills Wales / Essential Skills for Work and Life	44
8.15 Pathways to Employment	45
8.16 Cymraeg i Oedolion / Welsh for Adults	46
8.17 Eduqas Technical Awards	47
8.18 Sustainability	49
8.19 Advanced Manufacturing Technologies - Semiconductors	50
9.0 Health & Social Care Wales	53
10.0 Eduqas T Level	65

This document summarises the WJEC CBAC and WJEC Eduqas Entry Fees for 2025/26 from 1 September 2025. It should be noted that all Entry and Registration Fees apply from 1st September 2025 and assume that there is no change in what aspects of service are paid for by government.

To assist in reading this document, the Entry Fees for general and vocational qualifications are grouped and listed by subject. Where unit entry is allowable, the unit entry fee is also provided. If the qualification has a double award or short course entry option, the respective double award and short course entry fees are also provided.

2.0 What do WJEC CBAC and Eduqas fees include?

- ✓ Free and unlimited access to digital educational resources for teachers and learners and a range of non-digital support for teachers including access to specifications, SAMs and teacher guides (for qualifications delivered in Wales, this includes bilingual material).
- ✓ Direct access to our team of subject specialists, offering teachers professional subject support.
- ✓ Direct access to our customer support team.
- ✓ Unlimited teacher access to the latest mark schemes, sample assessment materials and past papers.
- ✓ All visiting moderation.
- ✓ All external verification.

This section details the processes followed by WJEC in relation to invoicing centres for Entry Fees.

3.1 Issuing of Invoices

WJEC will issue invoices for each qualification as follows:

- On time entries will be invoiced at the end of the amendment window
- Late fees will be invoiced after the date on which very late fees are applied.
- Very late fees will be invoiced after the closing date for late Cash-Ins

Generally, invoices will be issued within 4 weeks of the above deadlines.

Invoices will be emailed to the centre contact using the confirmed email address held by WJEC's Finance Department.

3.2 Invoice Content

On time invoices will provide a breakdown of fees by qualification/unit, including unit price and quantity. For late and very late fees, the invoice will also provide detail of the candidates.

Each invoice will be allocated a unique invoice number and will provide clear details of the fee being charged,

3.3 Payment Terms

WJEC payment terms are 21 days from the date of the invoice. If full payment is not received by this date, WJEC will instigate its standard credit control processes to collect overdue debts.

3.4 Payment of Invoices

Invoices should be settled by either bank transfer or cheque, and details of these methods of payment are included on each invoice.

3.5 Retention of Invoices

Invoices are retained for the previous complete six financial years plus the current financial year in accordance with legal requirements on the retention of records.

3.6 Contact Details

Should centres require further information in relation to entries, centres should contact WJEC's Entries team on 029 2026 5193 or by e-mail to entries@wjec.co.uk

For information in relation to payment or copy of invoices, centres should contact WJEC's Accounts team on 02920 2026 5198 or by e-mail to accounts@wjec.co.uk

4.1 Late, Very Late Entries and Registrations

Centres must submit their entries (and registrations) in an accurate and timely way, to ensure that WJEC is able to provide correct examination and assessment materials and issue examination results on time. WJEC actively encourages centres to submit their entries on time to avoid incurring additional work and cost at WJEC and subsequent cost to themselves in the form of late fees and to allow sufficient time for centres' own self-review.

Entry Deadlines for all 2025/26 qualifications are detailed in **4.1a**, along with the Amendment Window and dates from which Late Fees and Very Late Fees will apply. The table below provides key information on entry terminology:

Terminology

Entry	Candidate is correctly entered with appropriate personal details, qualification entry code and subject/unit entry code information (and Cash-In code where applicable) and entry complies with the related entry rules. A submission that does not have the appropriate information included and that does not comply with the entry rules is incorrect and will be rejected.
Entry Deadline	The final date that entries can be received and processed by WJEC without incurring additional charges.
Amendment Window	The period when centres can make amendments to entries at no additional cost.
Amendment Date	The date by which all amendments to entries must be submitted, to ensure no additional charges will be applied.
Entry Fee	The Entry Fee indicated for the specific qualification or unit.
Late Fee Date	The date from which all entries and amendments will incur a Late Fee charge. The Late Fee is equivalent to 2 times the Entry Fee for that qualification (or unit).
Very Late Fee Date	The date from which all entries and amendments will incur a Very Late Fee charge. The Very Late Fee is equivalent to 2.5 times the Entry Fee for that qualification (or unit).

Centres should be aware that WJEC may refuse late and very late entries for some qualifications if there is a risk to the integrity and security of the examination or assessment delivery or to the processing of timely results.

For information on early entry requirements in qualifications teaching from September 2025 please see the WJEC website.
<https://www.wjec.co.uk/qualifications/gcse-geography-teaching-from-2025/>

4.0 Supplementary Fees (continued)

4.1a Examination Entry Deadlines

QUALIFICATION	SERIES	ENTRY DEADLINE	AMENDMENT DATE	AMENDMENT WINDOW	LATE FEES PAYABLE FROM (LATE DATE)	VERY LATE FEES PAYABLE FROM (VERY LATE DATE)
GCE	May / June 2026	21 February 2026	18 March 2026	19 working days	19 March 2026	19 April 2026
GCSE	November 2025	4 October 2025	16 October 2025	10 working days	17 October 2025	1 November 2025
	January 2026	21 October 2025	11 November 2025	16 working days	12 November 2025	12 December 2025
	May / June 2026 ¹	21 February 2026	18 March 2026	19 working days	19 March 2026	19 April 2026
Entry Level	May / June 2026	21 February 2026	18 March 2026	19 working days	19 March 2026	19 April 2026
Welsh Baccalaureate	New Registrations	31 October 2025	30 November 2025	21 working days	1 December 2025	1 February 2026
	January 2026	21 November 2025	9 January 2026	35 working days	10 January 2026	20 January 2026
	June 2026	21 February 2026	15 April 2026	39 working days	16 April 2026	1 May 2026

For details of the last dates for entry please refer to the “entry procedures and coding information” book.

¹Please see the WJEC website for early entries process. <https://www.wjec.co.uk/qualifications/gcse-geography-teaching-from-2025/>

4.0 Supplementary Fees (continued)

4.1a Examination Entry Deadlines (continued)

QUALIFICATION	SERIES	ENTRY DEADLINE	AMENDMENT DATE	AMENDMENT WINDOW	LATE FEES PAYABLE FROM (LATE DATE)	VERY LATE FEES PAYABLE FROM (VERY LATE DATE)
Vocational Awards and Certificates	January 2026	21 October 2025	11 November 2025	16 working days	12 November 2025	12 December 2025
	June 2026	21 February 2026	18 March 2026	19 working days	19 March 2026	19 April 2026
Extended Project	June 2026	21 March 2026	4 April 2026	10 working days	5 April 2026	5 May 2026
Entry Pathways	January 2026	21 October 2025	11 November 2025	16 working days	12 November 2025 to 13 December 2025	VERY LATE ENTRY NOT ACCEPTED*
	June 2026	18 March 2026	5 May 2026	35 working days	N/A	6 May 2026
Certificate in Latin	January 2026	21 October 2025	11 November 2025	16 working days	12 November 2025	12 December 2025
	June 2026	21 February 2026	18 March 2026	19 working days	19 March 2026	19 April 2026
Certificate in Additional Mathematics	June 2026	21 February 2026	18 March 2026	19 working days	19 March 2026	19 April 2026

For details of the last dates for entry please refer to the “entry procedures and coding information” book.

* In exceptional circumstances late entry will be allowed and a late fee payable.

4.0 Supplementary Fees (continued)

4.1a Examination Entry Deadlines (continued)

QUALIFICATION	SERIES	ENTRY DEADLINE	AMENDMENT DATE	AMENDMENT WINDOW	LATE FEES PAYABLE FROM (LATE DATE)	VERY LATE FEES PAYABLE FROM (VERY LATE DATE)
Foundation Diploma in Art and Design	June 2026	21 February 2026	18 March 2026	19 working days	19 March 2026	19 April 2026
Applied Certificates and Diplomas	June 2026	21 February 2026	18 March 2026	19 working days	19 March 2026	19 April 2026
Language Pathways	January 2026	21 October 2025	30 November 2025	29 working days	LATE ENTRY NOT ACCEPTED*	
	June 2026	21 February 2026	30 April 2026	50 working days	LATE ENTRY NOT ACCEPTED*	
Cymraeg Gwaith / Work Welsh	January 2026	21 October 2025	11 November 2025	16 working days	12 November 2025 to 13 December 2025	VERY LATE ENTRY NOT ACCEPTED*
	June 2026	21 February 2026	18 March 2026	19 working days	19 March 2026 to 6 May 2026	VERY LATE ENTRY NOT ACCEPTED*
Health & Social Care & Childcare T Level	See footnote ¹					
	See footnote ²					

For details of the last dates for entry please refer to the “entry procedures and coding information” book.

* In exceptional circumstances late entry will be allowed and a late fee payable.

¹ For Health & Social Care & Childcare qualifications offered by WJEC and City & Guilds, please see the website <https://www.healthandcarelearning.wales/>

² For T Level, please see the website <https://www.eduqas.co.uk/qualifications/t-level-building-services-engineering-for-construction/>

4.2 Amendments

Non-chargeable Amendments

- Centres can change the personal details for candidates entered for WJEC qualifications up to the Certificate Printing Deadlines outlined below, at no additional charge.

Certificate Printing Deadlines

Series	Certificate Printing Deadline
November 2025	31 January 2026
January 2026	31 March 2026
June 2026	4 September 2026

Chargeable Amendments

- If a centre submits a qualification or unit change (amendment) related to the following outside the amendment window:
 - Tier**
 - Subject**
 - Option**
- The centre will be charged a fee equivalent to the Late Fee or Very Late Fee (less the standard fee already paid), depending on when the late amendment is made. For example, an amendment made on 24th October to the tier or subject of an entry for a November series GCSE would be deemed a Late Entry and would generate an additional standard entry fee charge. Similarly, if an amendment was made as late as 1st November, this would be deemed a Very Late Entry and would generate an additional amendment fee equivalent to one and half times the standard entry fee.
- If candidate personal details are amended after the Certificate Printing Deadlines (indicated above), a £10.50 charge will be applied, to reflect the additional time and materials required to issue a revised certificate. Please note that personal details may only be amended via this route up to 12 months after certificate issue. If centres wish to amend personal details after this date, they will need to follow the replacement certificate process outlined on WJEC's public website.

4.3 Late Cash-In (Aggregation) Fee

Where required, centres should include the appropriate Cash-In code for a qualification when submitting their entries to WJEC. If a Cash-In code is subsequently submitted by the Amendment Date, then no additional charge will apply. If the Cash-In code is submitted after the Amendment Date, the following fees will apply:

Late and Very Late Cash-In

Cash-In received after Amendment Date	Late	£10.50
January Series - Cash-In received between publication of results and 13 th April 2026	Very Late	£21.00
Summer Series - Cash-In received between publication of results and 20 th September 2026	Very Late	£21.00

Please note that Cash-In codes need to be applied to some subjects in the following Qualifications:

- GCSE unitised
- A Level unitised
- Entry Pathways
- Applied Certificates and Diplomas
- Vocational Awards and Certificates
- Welsh Baccalaureate
- Cymraeg Gwaith / Work Welsh

4.4 Entry Withdrawal

If centres withdraw a candidate, subject or unit after the amendment date, in most cases the entry fee will not be refunded.

Where centres are waiting on candidate examination results for the January series in order to decide whether those candidates also need to be entered for the summer series examinations, centres must enter **all possible candidates** by the entry deadline for the summer series. Centres can then withdraw candidates, as required, during the amendment window, once January examination results are published early in March: in these circumstances, the entry fee will not be charged.

Where a candidate is unable to sit an examination due to ill health or bereavement and a centre communicates this formally to WJEC within 2 weeks of the examination date (along with an accompanying medical certificate for ill health cases), WJEC may refund the candidate entry fee. Eligibility for refund will be considered on a case by case basis.

In situations where candidates are deceased prior to an examination sitting, the centre should provide a formal letter communicating this to WJEC so that we can respond appropriately in relation to the fee refund and other matters.

All correspondence relating to the above should be sent to:

entries@wjec.co.uk

4.5 Transfer of Candidates

Where a candidate is entered for an examination at one centre and then needs to take the examination at an alternative UK or Non-UK centre*, the following fees will apply:

Transfer fees

Candidates sitting examinations at UK centres	£32.50
Candidates sitting examinations outside of the UK	£65.00

*Please note that the centre must also meet the relevant JCQ requirements for transfer candidates.

4.6 Centres with Subjects Requiring Examiner or Moderator Visits

WJEC arranges travel and accommodation (where necessary) for examiners/moderators to enable the visit to take place. Therefore centres are advised that any requests to change the arranged date within 10 working days of the visit may incur charges that are equivalent to the travel and accommodation costs incurred by the organisation.

4.7 Overseas centre administration fees

Annual administration fee for examination services	£880.00
--	---------

4.8 New qualifications – teaching from September 2025

Our approved specifications for the first wave of Made-for-Wales GCSEs and related qualifications are now available. <https://www.wjec.co.uk/articles/first-wave-of-made-for-wales-qualifications-approved/>

These specifications are available to teach from September 2025. In addition, a comprehensive assessment pack for each qualification, including detailed assessment arrangements and sample assessment materials are available from your subject page.

5.1 WJEC GCSE resit entries

If a candidate sat adapted WJEC GCSE qualifications in 2022 and wish to resit in 2026 or a future series, please contact GCSE@wjec.co.uk for guidance on options and entry requirements.

5.2 WJEC GCE resit entries

If a candidate was awarded a WJEC AS/A Level grade in 2021 or 2022 and wishes to resit in 2026 or a future series, please contact GCE@wjec.co.uk for guidance on options and entry requirements.

5.3 Remote Invigilation service

Fees listed for qualification entry do not include optional Remote Invigilation services for qualifications where this is available.

Remote Invigilation fee service	£15.00
---------------------------------	--------

For details of Post Results Services for November 2025 and January 2026 series, please refer to the documents that will be published on the WJEC website at https://www.wjec.co.uk/home/administration/results-and-grade-boundaries/#tab_1 when applicable.

Summer 2026 fees will be published at a later date.

7.1 WJEC CBAC GCSE – Teaching from 2025

SUBJECT*	NUMBER OF UNITS	UNIT FEE	FULL QUALIFICATION FEE
Art and Design (Linear)	-	-	£46.80
Business (Unitised) ¹	4	£11.70	£46.80
Computer Science (Unitised) ¹	2	£23.40	£46.80
Core Cymraeg (Linear)	-	-	£46.80
Cymraeg Language and Literature – Double Award (Unitised) ¹ Unit 1,2,3 Unit 4b,5,6	7	£11.70 £19.50	£93.60
Cymraeg Language and Literature – Single Award (Unitised) ¹	4	£11.70	£46.80
Drama (Linear)	-	-	£46.80
English Language and Literature – Double Award (Unitised) ¹ Unit 1,2,3 Unit 4b,5,6	7	£11.70 £19.50	£93.60
English Language and Literature – Single Award (Unitised) ¹	4	£11.70	£46.80
Food and Nutrition (Linear)	-	-	£46.80
French (Linear)	-	-	£46.80

*These fees relate to GCSE qualifications regulated by Qualifications Wales, for first teaching September 2025. Please note that these prices are indicative and will be subject to normal inflationary related change for 2026/27.

¹Partial entry opportunity available in 2025/26.

7.0 General Qualifications (continued)

7.1 WJEC CBAC GCSE – Teaching from 2025 (continued)

SUBJECT*	NUMBER OF UNITS	UNIT FEE	FULL QUALIFICATION FEE
Geography (Unitised) ^{1,2}	4	£11.70	£46.80
German (Linear)	-	-	£46.80
Mathematics and Numeracy – Double Award (Unitised) ¹	3	£31.20	£93.60
Music (Linear)	-	-	£46.80
Religious Studies (Unitised) ¹	4	£11.70	£46.80
Spanish (Linear)	-	-	£46.80

*These fees relate to GCSE qualifications regulated by Qualifications Wales, for first teaching September 2025. Please note that these prices are indicative and will be subject to normal inflationary related change for 2026/27.

¹Partial entry opportunity available in 2025/26.

²Please see the WJEC website for early entries process. <https://www.wjec.co.uk/qualifications/gcse-geography-teaching-from-2025/>

7.0 General Qualifications (continued)

7.2 WJEC CBAC GCSE – Current Specifications

SUBJECT*	NUMBER OF UNITS	UNIT FEE	FULL QUALIFICATION FEE
Applied Science – Double Award (Unitised)	5	£18.72	£93.60
Applied Science – Single Award (Unitised)	4	£11.70	£46.80
Art and Design (Linear)	-	-	£46.80
Biology (Unitised)	3	£15.60	£46.80
Built Environment (Unitised)	3	£15.60	£46.80
Business Studies (Linear)	-	-	£46.80
Chemistry (Unitised)	3	£15.60	£46.80
Computer Science (Linear)	-	-	£46.80
Design & Technology – Engineering Design (Linear)	-	-	£46.80
Design & Technology – Fashion & Textiles (Linear)	-	-	£46.80
Design & Technology – Product Design (Linear)	-	-	£46.80
Digital Technology (Linear)	-	-	£46.80

*These fees relate to GCSE qualifications regulated by Qualifications Wales.

7.0 General Qualifications (continued)

7.2 WJEC CBAC GCSE – Current Specifications (continued)

SUBJECT*	NUMBER OF UNITS	UNIT FEE	FULL QUALIFICATION FEE
Drama (Linear)	-	-	£46.80
English Language (Linear)	-	-	£46.80
English Literature (Unitised)	3	£15.60	£46.80
Food & Nutrition (Linear)	-	-	£46.80
French (Linear)	-	-	£46.80
Geography (Linear)	-	-	£46.80
German (Linear)	-	-	£46.80
Health & Social Care & Childcare (Unitised) – Single Award	2	£23.40	£46.80
Health & Social Care & Childcare (Unitised) – Double Award	4	£23.40	£93.60
History (Unitised)	4	£11.70	£46.80
Mathematics (Linear)	-	-	£46.80
Mathematics – Numeracy (Linear)	-	-	£46.80
Media Studies (Linear)	-	-	£46.80

*These fees relate to GCSE qualifications regulated by Qualifications Wales.

7.0 General Qualifications (continued)

7.2 WJEC CBAC GCSE – Current Specifications (continued)

SUBJECT*	NUMBER OF UNITS	UNIT FEE	FULL QUALIFICATION FEE
Music (Linear)	-	-	£46.80
Physical Education – Single Award (Linear)	-	-	£46.80
Physical Education – Short Course (Linear)	-	-	£30.48
Physics (Unitised)	3	£15.60	£46.80
Religious Studies – Single Award (Unitised)			
Unit 1	2	£30.48	£46.80
Unit 2,3		£16.32	
Religious Studies – Short Course (Unitised)	1	£30.48	£30.48
Science - Double Award (Unitised)			
Unit 1,2,3,4,5,6	7	£13.37	£93.60
Unit 7		£13.38	
Spanish (Linear)	-	-	£46.80
Welsh Language (Linear)	-	-	£46.80
Welsh Literature (Unitised)	4	£11.70	£46.80
Welsh Second Language (Unitised)	4	£11.70	£46.80

*These fees relate to GCSE qualifications regulated by Qualifications Wales

7.3 WJEC Eduqas GCSE – Linear Specifications

Subjects designated for Wales

SUBJECT*	FULL QUALIFICATION FEE
Electronics (Linear)	£46.80
Film Studies (Linear)	£46.80
Geology (Linear)	£46.80
Latin (Linear)	£46.80
Sociology (Linear)	£46.80

*These fees relate to GCSE qualifications regulated by Ofqual and designated by Qualifications Wales.

7.4 WJEC Eduqas GCSE – Linear Specifications

SUBJECT*	FULL QUALIFICATION FEE
Art & Design	£46.80
Business	£46.80
Computer Science	£46.80
Design & Technology	£46.80
Drama	£46.80
Electronics	£46.80
English Language	£46.80
English Literature	£46.80
Film Studies	£46.80
Food Preparation & Nutrition	£46.80
Geography Specification A	£46.80
Geography Specification B	£46.80
Geology	£46.80

*These fees relate to GCSE qualifications regulated by Ofqual.

7.4 WJEC Eduqas GCSE – Linear Specifications (continued)

SUBJECT*	FULL QUALIFICATION FEE
History	£46.80
Latin	£46.80
Mathematics	£46.80
Media Studies	£46.80
Music	£46.80
Physical Education – Short Course	£30.48
Physical Education – Full Course	£46.80
Religious Studies Route A	£46.80
Religious Studies Route B	£46.80
Religious Studies – Short Course	£30.48
Sociology	£46.80

*These fees relate to GCSE qualifications regulated by Ofqual.

7.0 General Qualifications (continued)

7.5 WJEC CBAC AS and A Levels – Current Specifications

SUBJECT*	NUMBER OF UNITS		AS UNIT FEE 2026	A2 UNIT FEE 2026	FULL A LEVEL 2026
	AS	A2			
Art & Design	1	2	£61.86	£30.93	£123.72
Biology Unit 1, 2 Unit 3, 4, 5	2	3	£30.93	£20.62	£123.72
Built Environment	2	2	£30.93	£30.93	£123.72
Business	2	2	£30.93	£30.93	£123.72
Chemistry Unit 1, 2 Unit 3, 4, 5	2	3	£30.93	£20.62	£123.72
Computer Science Unit 1, 2 Unit 3, 4, 5	2	3	£30.93	£20.62	£123.72
Design & Technology	2	2	£30.93	£30.93	£123.72
Digital Technology	2	2	£30.93	£30.93	£123.72
Drama & Theatre	2	2	£30.93	£30.93	£123.72

*These fees relate to GCE qualifications regulated by Qualifications Wales.

7.0 General Qualifications (continued)

7.5 WJEC CBAC AS and A Levels – Current Specifications (continued)

SUBJECT*	NUMBER OF UNITS		AS UNIT FEE 2026	A2 UNIT FEE 2026	FULL A LEVEL 2026
	AS	A2			
Economics	2	2	£30.93	£30.93	£123.72
English Language Unit 1, 2 Unit 3, 4, 5	2	3	£30.93	£20.62	£123.72
English Language & Literature Unit 1, 2 Unit 3, 4, 5	2	3	£30.93	£20.62	£123.72
English Literature Unit 1, 2 Unit 3, 4, 5	2	3	£30.93	£20.62	£123.72
French Unit 1, 2 Unit 3, 4, 5	2	3	£30.93	£20.62	£123.72
Geography Unit 1, 2 Unit 3, 4, 5	2	3	£30.93	£20.62	£123.72
German Unit 1, 2 Unit 3, 4, 5	2	3	£30.93	£20.62	£123.72
Government & Politics	2	2	£30.93	£30.93	£123.72

*These fees relate to GCE qualifications regulated by Qualifications Wales.

7.0 General Qualifications (continued)

7.5 WJEC CBAC AS and A Levels – Current Specifications (continued)

SUBJECT*	NUMBER OF UNITS		AS UNIT FEE 2026	A2 UNIT FEE 2026	FULL A LEVEL 2026
	AS	A2			
Health & Social Care, and Childcare	2	2	£30.93	£30.93	£123.72
History Unit 1, 2 Unit 3, 4, 5	2	3	£30.93	£20.62	£123.72
Law	2	2	£30.93	£30.93	£123.72
Mathematics	2	2	£30.93	£30.93	£123.72
Further Mathematics	3	2	£20.62	£30.93	£123.72
Media Studies	2	2	£30.93	£30.93	£123.72
Music	3	3	£20.62	£20.62	£123.72

*These fees relate to GCE qualifications regulated by Qualifications Wales.

7.0 General Qualifications (continued)

7.5 WJEC CBAC AS and A Levels – Current Specifications (continued)

SUBJECT*	NUMBER OF UNITS		AS UNIT FEE 2026	A2 UNIT FEE 2026	FULL A LEVEL 2026
	AS	A2			
Physics Unit 1, 2 Unit 3, 4, 5	2	3	£30.93	£20.62	£123.72
Physical Education	2	2	£30.93	£30.93	£123.72
Psychology	2	2	£30.93	£30.93	£123.72
Religious Studies Unit 1, 2 Unit 3, 4, 5, 6	2	3	£30.93	£20.62	£123.72
Sociology	2	2	£30.93	£30.93	£123.72
Spanish Unit 1, 2 Unit 3, 4, 5	2	3	£30.93	£20.62	£123.72
Welsh	3	3	£20.62	£20.62	£123.72
Welsh Second Language	3	3	£20.62	£20.62	£123.72

*These fees relate to GCE qualifications regulated by Qualifications Wales.

7.0 General Qualifications (continued)

7.6 WJEC Eduqas AS and A Levels – Current Specifications designated for Wales

SUBJECT*	AS FEE	A LEVEL FEE
Electronics	£68.13	£123.72
Film Studies	£68.13	£123.72
Geology	£68.13	£123.72

*These fees relate to GCE qualifications regulated by Ofqual and designated by Qualifications Wales.

7.7 WJEC Eduqas AS and A Levels – Current Specifications

SUBJECT*	SUMMER 2026	
	AS FEE	A LEVEL FEE
Art & Design	£68.13	£123.72
Biology	£68.13	£123.72
Business	£68.13	£123.72
Chemistry	£68.13	£123.72
Computer Science	£68.13	£123.72
Design & Technology	£68.13	£123.72
Drama & Theatre	£74.67	£123.72
Economics	£68.13	£123.72
Electronics	£68.13	£123.72
English Language	£68.13	£123.72
English Language & Literature	£68.13	£123.72
English Literature	£68.13	£123.72
Film Studies	£68.13	£123.72
French	£68.13	£123.72

*These fees relate to GCE qualifications regulated by Ofqual.

7.7 WJEC Eduqas AS and A Levels – Current Specifications (continued)

SUBJECT*	SUMMER 2026	
	AS FEE	A LEVEL FEE
Geography	£68.13	£123.72
Geology	£68.13	£123.72
German	£68.13	£123.72
Law	£68.13	£123.72
Media Studies	£68.13	£123.72
Music	£74.67	£123.72
Physical Education	£74.67	£123.72
Physics	£68.13	£123.72
Psychology	£68.13	£123.72
Religious Studies	£68.13	£123.72
Sociology	£68.13	£123.72
Spanish	£68.13	£123.72

*These fees relate to GCE qualifications regulated by Ofqual.

8.0 Vocational Qualifications

8.1 WJEC Entry Level Certificate

SUBJECT	UNIT FEE	QUALIFICATION FEE
English	-	£30.98
Science	-	£30.98
Mathematics – Numeracy	-	£30.98
Welsh	-	£30.98

Pathways QCF

8.2 WJEC Entry Pathways

SUBJECT	UNIT FEE
Additional English	£6.47
Creative, Media & Performance Arts	£6.47
Healthy Living & Fitness	£6.47
Humanities	£6.47
ICT Users	£6.47
Independent Living	£6.47
Mathematics	£6.47
Personal & Social Development	£6.47
Personal Progress	£6.47
Preparing for Work	£6.47
Science Today	£6.47
Welsh	£6.47
Welsh Second Language	£6.47

Pathways

8.3 WJEC Language Pathways

SUBJECT	UNIT FEE	QUALIFICATION FEE
Cornish (all levels)	-	£6.47
French (all levels)	-	£6.47
German (all levels)	-	£6.47
Italian (all levels)	-	£6.47
Japanese (all levels)	-	£6.47
Mandarin (all levels)	-	£6.47
Spanish (all levels)	-	£6.47

Pathways

8.4 WJEC Pathways Cymraeg Gwaith / Work Welsh

SUBJECT	UNIT FEE	QUALIFICATION FEE
Cymraeg Gwaith / Work Welsh	£20.85	£62.55

Other Qualifications

8.5 WJEC Vocational Certificates

SUBJECT	NUMBER OF UNITS	UNIT FEE	FULL QUALIFICATION FEE
Additional Mathematics (Linear)	-	-	£41.70
Latin Language	2	£20.85	£41.70
Latin Language & Roman Civilisation	2	£20.85	£41.70

8.0 Vocational Qualifications (continued)

8.6 WJEC Vocational Awards and Certificates

SUBJECT	NUMBER OF UNITS		UNIT FEE	FULL QUALIFICATION FEE	
	AWARD	CERTIFICATE		AWARD	CERTIFICATE
Constructing the Built Environment	3	-	£20.85	£62.55	-
Events Operations ¹	3	-	£20.85	£62.55	-
Global Business Communication – French (2022 specification)	4	-	£20.85	£83.40	-
Global Business Communication – German (2022 specification)	4	-	£20.85	£83.40	-
Global Business Communication – Spanish (2022 specification)	4	-	£20.85	£83.40	-
Tourism	3	-	£20.85	£62.55	-

¹This qualification has been withdrawn and will award for the final time in Summer 2026.

8.7 WJEC Vocational Awards – Teaching from 2025

SUBJECT	NUMBER OF UNITS	UNIT FEE	FULL QUALIFICATION FEE
Additional Core Cymraeg ¹	2	£15.60	£31.20

¹First entry opportunity 2026/27. Please note that these prices are indicative and will be subject to normal inflationary related change for 2026/27.

8.0 Vocational Qualifications (continued)

8.8 WJEC Applied Certificates and Diplomas

SUBJECT	NUMBER OF UNITS			UNIT FEE	FULL QUALIFICATION FEE		
	CERTIFICATE		DIPLOMA		CERTIFICATE		DIPLOMA
Criminology	2		4	£19.26	£38.52		£77.04
Food Science & Nutrition	2		4	£19.26	£38.52		£77.04
Health & Social Care ¹	2		4	£19.26	£38.52		£77.04
Medical Science ²	3		6	£12.84	£38.52		£77.04

¹This qualification is not available to maintained centres in Wales.

²This qualification has been withdrawn and will award for the final time in Summer 2026.

8.0 Vocational Qualifications (continued)

8.9 WJEC Applied Certificates and Extended Certificates

SUBJECT	NUMBER OF UNITS			UNIT FEE	FULL QUALIFICATION FEE		
	CERTIFICATE	EXTENDED CERTIFICATE			CERTIFICATE	EXTENDED CERTIFICATE	
Business (2023 specification) ¹	2	4		£19.26	£38.52	£77.04	
Sport (2023 specification) ¹	2	4		£19.26	£38.52	£77.04	
Tourism (2023 specification) ¹	3	6		£12.84	£38.52	£77.04	

¹This qualification is not available to maintained centres in England and Northern Ireland

8.0 Vocational Qualifications (continued)

8.10 WJEC Alternative Academic Qualifications

SUBJECT	NUMBER OF UNITS			UNIT FEE	FULL QUALIFICATION FEE		
	CERTIFICATE	EXTENDED CERTIFICATE			CERTIFICATE	EXTENDED CERTIFICATE	
Medical Science (2025 specification) ¹	3	6		£12.84	£38.52	£77.04	

¹Partial entry opportunity available in 2025/26

8.11 WJEC Diploma in Foundation Studies

SUBJECT	QUALIFICATION FEE
Foundation Diploma in Art & Design	£156.38

8.12 WJEC Extended Project

SUBJECT	QUALIFICATION FEE
Extended Project Level 3	£47.17

8.13 Welsh Baccalaureate

SUBJECT	FEE
Welsh Baccalaureate KS4 Foundation / National – Registration Fee (per candidate)	£14.45
Welsh Baccalaureate KS4 Foundation / National challenges	£6.47
Welsh Baccalaureate KS4 Foundation / National individual project	£12.94
Welsh Baccalaureate KS4 Foundation / National cash-in fee	£6.47

The National/Foundation Welsh Baccalaureate framework will be awarded for the last time in Summer 2026 (see circular 129 issued in July 2025). Registration fees will be reduced from £27.89 to £14.45.

Welsh Baccalaureate entry fees will remain at the standard fee for that qualification regardless of the adapted assessment arrangements in place. Where applicable, a portion of the full qualification fee will be charged on qualification cash-in.

8.13 Welsh Baccalaureate (continued)

SUBJECT	FEE
Advanced Skills Baccalaureate Wales (Level 3) – Global Community Project	£25.25
Advanced Skills Baccalaureate Wales (Level 3) – Future Destinations Project	£25.25
Advanced Skills Baccalaureate Wales (Level 3) – Individual Project	£31.89

8.0 Vocational Qualifications (continued)

8.14 Essential Skills Wales / Essential Skills for Work and Life

SUBJECT	UNIT FEE	QUALIFICATION FEE
Essential Application of Number Skills* (Entry 1-3, Level 1-3)	-	£10.32
Essential Communication Skills* (Entry 1-3, Level 1-3)	-	£10.32
Essential Digital Literacy Skills (Entry 1-3, Level 1-3)	-	£10.32
Essential Employability Skills (Entry 3, Level 1-3)	-	£10.32
Essential Skills for Work and Life	£6.47	-

Fees listed for qualification entry do not include optional Remote Invigilation services for qualifications where this is available.

*Fee includes one resit opportunity of the on-line Confirmatory Test

8.0 Vocational Qualifications (continued)

8.15 Pathways to Employment

SUBJECT	AWARD FEE	CERTIFICATE FEE
Entry Level Award/Certificate in Securing Employment (Entry 3)	£32.67	£65.34
Level 1 Award/Certificate in Securing Employment	£32.67	£65.34
Entry Level Award/Certificate in Self Development and Wellbeing (Entry 3)	£32.67	£65.34
Level 1 Award/Certificate in Self Development and Wellbeing	£32.67	£65.34
Entry Level Award/Certificate in Preparing for Employment (Entry 3)	£32.67	£65.34
Level 1 Award/Certificate in Preparing for Employment	£32.67	£65.34

8.0 Vocational Qualifications (continued)

8.16 Cymraeg i Oedolion / Welsh for Adults

SUBJECT	SPEAKING TEST ONLY	COMPLETION FEE	FULL QUALIFICATION FEE
Mynediad / Entry	£15.40	£6.60	£22.00
Sylfaen / Foundation	£17.40	£6.60	£24.00
Canolradd / Intermediate	£19.40	£6.60	£26.00
Uwch / Advanced	£26.35	£8.65	£35.00

8.0 Vocational Qualifications (continued)

8.17 Eduqas Technical Awards

SUBJECT	NUMBER OF UNITS	UNIT FEE	FULL QUALIFICATION FEE
Construction and the Built Environment			
Introduction to the built environment	2	£27.16	£67.90
Designing the built environment		£40.74	
Constructing the built environment		£40.74	
Engineering			
Manufacturing engineering products	3	£20.37	£67.90
Designing engineering products		£20.37	
Solving engineering problems		£27.16	
Health and Social Care			
Health, well-being and development throughout the lifespan	2	£27.16	£67.90
Outcome-focused and person centred practice in health and social care		£40.74	
Hospitality and Catering			
The hospitality and catering industry	2	£27.16	£67.90
Hospitality and catering in action		£40.74	

8.0 Vocational Qualifications (continued)

8.17 Eduqas Technical Awards (continued)

SUBJECT	NUMBER OF UNITS	UNIT FEE	FULL QUALIFICATION FEE
ICT			
ICT in society	2	£27.16	£67.90
ICT in context		£40.74	
Performing Arts			
Performing	3	£20.37	£67.90
Creating		£20.37	
Performing arts in practice		£27.16	
Retail Business			
The business of retail	3	£27.16	£67.90
Customer service for retail business		£20.37	
Merchandising and marketing retail products		£20.37	
Sport and Coaching Principles			
Fitness for sport	3	£27.16	£67.90
Improving sporting performance		£20.37	
Coaching principles		£20.37	

8.0 Vocational Qualifications (continued)

8.18 Sustainability

SUBJECT	FULL FEE	REDUCTION FOR PREVIOUS ACHIEVEMENT	NET FEE
Entry Level Award in Sustainability in Action – Entry 2	£32.67	N/A	£32.67
Entry Level Award in Sustainability in Action – Entry 3	£32.67	N/A	£32.67
Level 1 Award in Sustainability in Action	£32.67	N/A	£32.67
Level 2 Award in Sustainability in Action	£32.67	N/A	£32.67
Entry Level Award in Sustainability in Context – Entry 2 No previous qualification achievement Previous qualification achieved – Entry Level Award in Sustainability in Action – Entry 2	£45.61	N/A £32.67	£45.61 £12.94
Entry Level Award in Sustainability in Context – Entry 3 No previous qualification achievement Previous qualification achieved – Entry Level Award in Sustainability in Action – Entry 3	£45.61	N/A £32.67	£45.61 £12.94
Level 1 Award in Sustainability in Context No previous qualification achievement Previous qualification achieved – Level 1 Award in Sustainability in Action	£45.61	N/A £32.67	£45.61 £12.94
Level 2 Award in Sustainability in Context No previous qualification achievement Previous qualification achieved – Level 2 Award in Sustainability in Action	£45.61	N/A £32.67	£45.61 £12.94

8.18 Sustainability (continued)

SUBJECT	FULL FEE	REDUCTION FOR PREVIOUS ACHIEVEMENT	NET FEE
Entry Level Certificate in Sustainability in Context – Entry 2			
No previous qualification achievement	£65.34	N/A	£65.34
Previous qualification achieved – Entry Level Award in Sustainability in Action – Entry 2		£32.67	£32.67
Previous qualification achieved – Entry Level Award in Sustainability in Context – Entry 2		£45.61	£19.73
Entry Level Certificate in Sustainability in Context – Entry 3			
No previous qualification achievement	£65.34	N/A	£65.34
Previous qualification achieved – Entry Level Award in Sustainability in Action – Entry 3		£32.67	£32.67
Previous qualification achieved – Entry Level Award in Sustainability in Context – Entry 3		£45.61	£19.73
Level 1 Certificate in Sustainability in Context			
No previous qualification achievement	£65.34	N/A	£65.34
Previous qualification achieved – Level 1 Award in Sustainability in Action		£32.67	£32.67
Previous qualification achieved – Level 1 Award in Sustainability in Context		£45.61	£19.73
Level 2 Certificate in Sustainability in Context			
No previous qualification achievement	£65.34	N/A	£65.34
Previous qualification achieved – Level 2 Award in Sustainability in Action		£32.67	£32.67
Previous qualification achieved – Level 2 Award in Sustainability in Context		£45.61	£19.73

8.0 Vocational Qualifications (continued)

8.18 Sustainability (continued)

SUBJECT	FULL FEE	REDUCTION FOR PREVIOUS ACHIEVEMENT	NET FEE
Entry Level Extended Certificate in Sustainability in Context – Entry 2			
No previous qualification achievement		N/A	£98.01
Previous qualification achieved – Entry Level Award in Sustainability in Action – Entry 2	£98.01	£32.67	£65.34
Previous qualification achieved – Entry Level Award in Sustainability in Context – Entry 2		£45.61	£52.40
Previous qualification achieved – Entry Level Certificate in Sustainability in Context – Entry 2		£65.34	£32.67
Entry Level Extended Certificate in Sustainability in Context – Entry 3			
No previous qualification achievement		N/A	£98.01
Previous qualification achieved – Entry Level Award in Sustainability in Action – Entry 3	£98.01	£32.67	£65.34
Previous qualification achieved – Entry Level Award in Sustainability in Context – Entry 3		£45.61	£52.40
Previous qualification achieved – Entry Level Certificate in Sustainability in Context – Entry 3		£65.34	£32.67
Level 1 Extended Certificate in Sustainability in Context			
No previous qualification achievement		N/A	£98.01
Previous qualification achieved – Level 1 Award in Sustainability in Action	£98.01	£32.67	£65.34
Previous qualification achieved – Level 1 Award in Sustainability in Context		£45.61	£52.40
Previous qualification achieved – Level 1 Certificate in Sustainability in Context		£65.34	£32.67
Level 2 Extended Certificate in Sustainability in Context			
No previous qualification achievement		N/A	£98.01
Previous qualification achieved – Level 2 Award in Sustainability in Action	£98.01	£32.67	£65.34
Previous qualification achieved – Level 2 Award in Sustainability in Context		£45.61	£52.40
Previous qualification achieved – Level 2 Certificate in Sustainability in Context		£65.34	£32.67
Level 2 Sustainability in Practice – Future Changemakers			
No previous qualification achievement	£65.34	N/A	£65.34
Previous qualification achieved – Sustainability in Action – all levels		£32.67	£32.67

8.18 Sustainability (continued)

ENDORSED UNIT	ENDORSED UNIT FEE*
Climate Change – Defining Climate Change and its Causes	£12.94
Climate Change – The Impacts of Climate Change	£12.94
Climate Change – Inequalities in the Impacts of Climate Change	£12.94
Climate Change – Managing the Impacts of Climate Change	£12.94
Residential – Homes for People and Wildlife	£12.94
Residential – Sustainability in the Home	£12.94
Residential – Energy in the Home	£12.94
Residential – Living by the Ocean	£12.94

*Completion of an endorsed unit does not count as previous qualification achievement for qualifications listed on previous pages.

8.18 Sustainability (continued)

ENDORSED UNIT	ENDORSED UNIT FEE*
Industry and Business – Carbon and its Impact on Sustainability	£12.94
Industry and Business – Green Careers and the World of Work	£12.94
Industry and Business – Technology for Sustainable Futures	£12.94
Industry and Business – Sustainable Procurement and Fairtrade	£12.94
Waste, the Circular Economy & Transport – Waste Management	£12.94
Waste, the Circular Economy & Transport – Circular Economy	£12.94
Waste, the Circular Economy & Transport – The 3 Rs	£12.94
Waste, the Circular Economy & Transport – Sustainable Transport	£12.94

*Completion of an endorsed unit does not count as previous qualification achievement for qualifications listed on previous pages.

8.0 Vocational Qualifications (continued)

8.19 Advanced Manufacturing Technologies - Semiconductors

SUBJECT	FULL FEE	REDUCTION FOR PREVIOUS ACHIEVEMENT	NET FEE
Level 2 Award in Introduction to advanced manufacturing (semiconductors)	£32.67	N/A	£32.67
Level 2 Certificate in Introduction to advanced manufacturing (semiconductors)			
No previous qualification achievement	£65.34	N/A	£65.34
Previous qualification achieved – Level 2 Award in Introduction to advanced manufacturing (semiconductors)		£32.67	£32.67
Level 2 Extended certificate in Introduction to advanced manufacturing (semiconductors)			
No previous qualification achievement	£98.01	N/A	£98.01
Previous qualification achieved – Level 2 Certificate in Introduction to advanced manufacturing (semiconductors)		£65.34	£32.67
Previous qualification achieved – Level 2 Award in Introduction to advanced manufacturing (semiconductors)		£32.67	£65.34
Level 2 Diploma in Introduction to advanced manufacturing (semiconductors)			
No previous qualification achievement		N/A	£130.68
Previous qualification achieved – Level 2 Extended certificate in Introduction to advanced manufacturing (semiconductors)	£130.68	£98.01	£32.67
Previous qualification achieved – Level 2 Certificate in Introduction to advanced manufacturing (semiconductors)		£65.34	£65.34
Previous qualification achieved – Level 2 Award in Introduction to advanced manufacturing (semiconductors)		£32.67	£98.01

8.19 Advanced Manufacturing Technologies - Semiconductors (continued)

ENDORSED UNIT	ENDORSED UNIT FEE*
The semiconductor industry	£12.94
Careers in the semiconductor industry	£12.94
Understanding semiconductor circuitry	£12.94
Understanding semiconductor manufacturing	£12.94
Working in a cleanroom environment	£12.94
Understanding quality control in the semiconductor industry	£12.94

*Completion of an endorsed unit does not count as previous qualification achievement for qualifications listed on the previous page

8.19 Advanced Manufacturing Technologies – Semiconductors (continued)

SUBJECT	QUALIFICATION FEE
Level 4 Higher technical qualification for semiconductor technicians	£268.63

9.0 Health & Social Care Wales

9.1 Health & Social Care Wales – Qualifications enterable through WJEC in 2025/26

SUBJECT*	UNIT FEE	QUALIFICATION FEE
GCSE Health & Social Care, & Childcare – Single Award	£23.40	£46.80
GCSE Health & Social Care, & Childcare – Double Award	£23.40	£93.60
Level 2 Health & Social Care: Principles & Contexts	£31.00	£62.00
Level 2 Children's Care, Play, Learning & Development: Core ¹	-	£108.00
Level 2 Children's Care, Play, Learning & Development: Practice & Theory		
Supporting core practice in Children's Care, PLD	£106.00	£136.00
Understanding Children's Care, PLD	£30.00	
Other units	-	

Fees listed for qualification entry do not include optional Remote Invigilation services for qualifications where this is available.

*For further information, please see the website <https://www.healthandcarelearning.wales/>

¹Effective period: 1 October 2025 to 31 August 2026. Full qualification fee includes one free resit of MCQ test. Any resit thereafter for L2 CCPLD carries a fee of £54.00.

9.0 Health & Social Care Wales (continued)

9.1 Health & Social Care Wales – Qualifications enterable through WJEC in 2025/26

SUBJECT*	UNIT FEE	QUALIFICATION FEE
Level 3 Children's Care, Play, Learning & Development: Practice & Theory – award from Summer 2025		
Promoting core practice in CCPLD	£145.69	
Principles & theories that influence CCPLD in the 21 st century in Wales	£30.22	£281.00
Investigating current issues in CCPLD in Wales	£46.09	
Practical Skills for Work Placement in Early Years (0-7 years)	£59.00	
Other units	-	
Level 3 Certificate in Health & Social Care: Principles and Contexts		£94.00
Non-examination assessments - Unit 1,3	£23.50	
External examination assessment - Unit 2	£47.00	
Level 3 Foundation Diploma in Health & Social Care: Principles and Contexts		£141.00
Non-examination assessments - Unit 1,3,4,6	£23.50	
Non-examination assessment - Unit 5	£47.00	
External examination assessment - Unit 2	£47.00	

*For further information, please see the website <https://www.healthandcarelearning.wales/>

9.0 Health & Social Care Wales (continued)

9.1 Health & Social Care Wales – Qualifications enterable through WJEC in 2025/26

SUBJECT*	UNIT FEE	QUALIFICATION FEE
Level 3 Diploma in Health & Social Care: Principles and Contexts		
Non-examination assessments - Unit 1,3,4,6	£23.50	£188.00
Non-examination assessment - Unit 5	£47.00	
External examination assessment - Unit 2	£47.00	
Level 3 Extended Diploma in Health & Social Care: Principles and Contexts		
Non-examination assessments - Unit 1,3,4,6,8,9	£23.50	£282.00
Non-examination assessment - Unit 5	£47.00	
External examination assessment - Unit 2,7	£47.00	
Advanced Subsidiary GCE in Health & Social Care & Childcare	£30.93	£61.86
Advanced GCE in Health & Social Care & Childcare	£30.93	£123.72

*For further information, please see the website <https://www.healthandcarelearning.wales/>

9.0 Health & Social Care Wales (continued)

9.2 Health & Social Care Wales – Complete list of qualifications

SUBJECT*	UNIT FEE	QUALIFICATION FEE
GCSE Health & Social Care, & Childcare – Single Award	£23.40	£46.80
GCSE Health & Social Care, & Childcare – Double Award	£23.40	£93.60
Level 2 Health & Social Care: Principles & Contexts	£31.00	£62.00
Level 3 Health & Social Care: Practice (Children & Young People) ¹	-	TBC
Level 3 Health & Social Care: Practice (Adults) ¹	-	TBC
Level 4 Professional Practice in Children's Care, Play, Learning and Development ¹	-	TBC
Level 5 Leadership & Management of Health & Social Care: Practice ¹	-	TBC

*For further information, please see the website <https://www.healthandcarelearning.wales/>

¹Qualification entered through City & Guilds

9.0 Health & Social Care Wales (continued)

9.2 Health & Social Care Wales – Complete list of qualifications

SUBJECT*	UNIT FEE	QUALIFICATION FEE
Level 2 Children's Care, Play, Learning & Development: Practice & Theory		
Supporting core practice in Children's Care, PLD	£106.00	£136.00
Understanding Children's Care, PLD	£30.00	
Other units	-	
Level 3 Children's Care, Play, Learning & Development: Practice & Theory – award from Summer 2025		
Promoting core practice in CCPLD	£145.69	
Principles & theories that influence CCPLD in the 21 st century in Wales	£30.22	£281.00
Investigating current issues in CCPLD in Wales	£46.09	
Practical skills for work placement in early years (0-7 years)	£59.00	
Other units	-	

*For further information, please see the website <https://www.healthandcarelearning.wales/>

9.0 Health & Social Care Wales (continued)

9.2 Health & Social Care Wales – Complete list of qualifications

SUBJECT*	UNIT FEE	QUALIFICATION FEE
Level 4 Preparing for Leadership & Management in Children's Care, Play, Learning & Development ¹	-	TBC
Level 5 Leadership & Management of Children's Care, Play, Learning & Development: Practice ¹	-	TBC
Level 2 Health & Social Care: Core (Children and Young People) ¹	-	TBC
Level 2 Health & Social Care: Core (Adults) ¹	-	TBC
Level 2 Health & Social Care: Core (Adults & Children and Young People) ¹	-	TBC
Level 3 Certificate in Health & Social Care: Principles and Contexts		£94.00
Non-examination assessments - Unit 1,3	£23.50	
External examination assessment - Unit 2	£47.00	
Level 3 Foundation Diploma in Health & Social Care: Principles and Contexts		£141.00
Non-examination assessments - Unit 1,3,4,6	£23.50	
Non-examination assessment - Unit 5	£47.00	
External examination assessment - Unit 2	£47.00	

*For further information, please see the website <https://www.healthandcarelearning.wales/>

¹Qualification entered through City & Guilds

9.0 Health & Social Care Wales (continued)

9.2 Health & Social Care Wales – Complete list of qualifications

SUBJECT*	UNIT FEE	QUALIFICATION FEE
Level 3 Diploma in Health & Social Care: Principles and Contexts		
Non-examination assessments - Unit 1,3,4,6	£23.50	£188.00
Non-examination assessment - Unit 5	£47.00	
External examination assessment - Unit 2	£47.00	
Level 3 Extended Diploma in Health & Social Care: Principles and Contexts		
Non-examination assessments - Unit 1,3,4,6,8,9	£23.50	£282.00
Non-examination assessment - Unit 5	£47.00	
External examination assessment - Unit 2,7	£47.00	
Level 2 Health & Social Care: Practice (Adults) ¹	-	TBC
Advanced Subsidiary GCE in Health & Social Care & Childcare	£30.93	£61.86
Advanced GCE in Health & Social Care & Childcare	£30.93	£123.72
Level 4 Preparing for Leadership & Management in Health & Social Care ¹	-	TBC

*For further information, please see the website <https://www.healthandcarelearning.wales/>

¹Qualification entered through City & Guilds

HEALTH & SOCIAL CARE WALES 2025/26

9.0 Health & Social Care Wales (continued)

9.2 Health & Social Care Wales – Complete list of qualifications

SUBJECT*	UNIT FEE	QUALIFICATION FEE
Level 2 Children's Care, Play, Learning & Development: Core ²	-	£108.00
Level 2 Children's Care, Play, Learning & Development: Practice ¹	-	TBC
Level 3 Children's Care, Play, Learning & Development: Practice ¹	-	TBC
Level 4 Professional Practice in Health and Social Care ¹	-	TBC
Level 4 Independent Advocacy ¹	-	TBC
Level 4 Adult Placement / Shared Lives ¹	-	TBC
Level 4 Social Services Practitioner ¹	-	TBC

*For further information, please see the website <https://www.healthandcarelearning.wales/>

¹Qualification entered through City & Guilds

²Effective period: 1 October 2025 to 31 August 2026. Full qualification fee includes one free resit of MCQ test. Any resit thereafter for L2 CCPLD carries a fee of £54.00.

10.1 Building Services Engineering for Construction

FEE TYPE	FEE
On time Registration Fee *	£395.00
Resit – TQ Core Component – External Test	£80.00
Resit – TQ Core Component – Employer Set Project	£40.00
Resit – Occupational Specialist Component	£195.00

*This entitles the candidate to one on-time entry in each of – External Test, Employer Set Project, Occupational Specialist Component. Resit entries are charged separately and shown above.

Please see the WJEC website for detailed information on late fees and post results services fees applicable to this qualification. <https://www.eduqas.co.uk/qualifications/t-level-building-services-engineering-for-construction/>