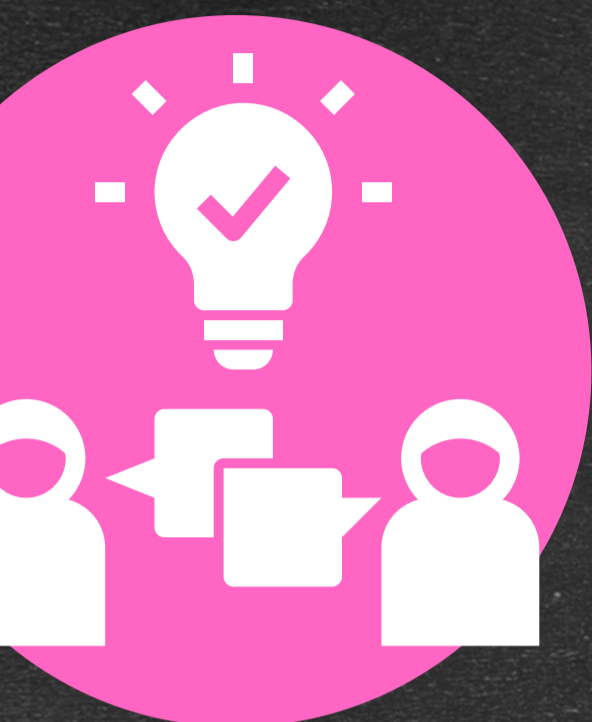


Assessments 2021

Stay informed, Stay learning.



UNDERSTAND THE CHANGES

- Following the cancellation of exams, this year's GCSE, AS and A levels will be based on Centre-Determined Grades.
- Your school or college will award grades based on appropriate evidence of your learning as outlined in the qualification assessment frameworks.

KNOW HOW YOU'LL BE ASSESSED

- Your school or college will choose the appropriate evidence they will use to inform your grade. This could include mock exams, other materials provided by WJEC, NEA and other assessed work.
- Your school or college will develop their approach to assessment and quality assurance, in line with guidance WJEC will provide. Once their approach is finalised, your school or college will let you know how you will be assessed for every subject.



KEEP LEARNING

- You should stay focused on your studies and keep learning.
- There's a whole host of FREE learning resources to help you at:
 - www.wjec.co.uk/Resources
 - www.bbc.co.uk/bitesize
 - hwb.gov.wales

BE READY TO PROGRESS!

- Make sure you get the breadth of subject understanding, skills, and knowledge you need to progress.

